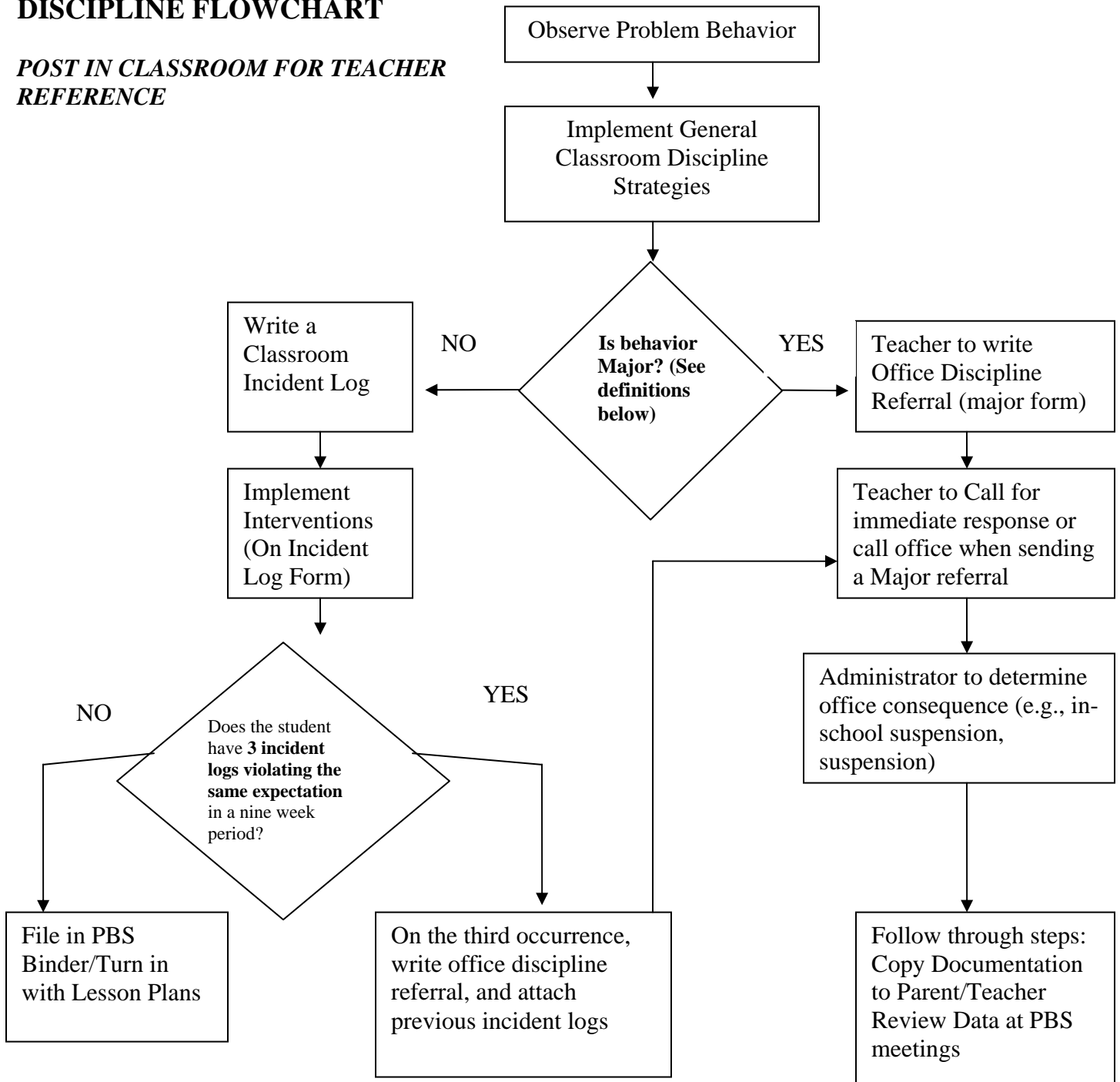


DISCIPLINE FLOWCHART

POST IN CLASSROOM FOR TEACHER REFERENCE



COMPARISON OF DEFINITIONS MINOR VERSUS MAJOR

EXPECTATION VIOLATED	Classroom Managed		Office Managed	
	BEHAVIOR	DEFINITION	BEHAVIOR	DEFINITION
NOT CARING	Inappropriate verbal language	Low intensity instance of inappropriate language, name calling, teasing	Abusive language/ Bullying/threatening	Verbal messages that include swearing, name calling, bullying language or use of words in an inappropriate way. Profane/disrespectful messages (verbal or gestured) to another person that includes threats or intimidation.
	Noncompliance/ Defiance/Disrespect	Brief or low- intensity failure to respond to adult requests, refusal to follow directions, talking back and/or socially rude interactions.	Open Defiance insubordination/ non-compliance	Flagrant or hostile challenge of the authority of a school staff member, bus driver, or any other adult in authority
NOT RESPONSIBLE	Disruption	Low- intensity, but inappropriate disruption, noise with materials; horseplay or roughhousing;	Disruption	Behavior causing an interruption in a class or activity; includes sustained loud talk, yelling, or screaming; and/or sustained out-of-seat behavior.
	Property Misuse	Low- intensity misuse of property	Property Damage	Student deliberately impairs the usefulness of property.
NOT SAFE	Physical Contact	Non-serious, but inappropriate physical contact, scuffling	Fighting/ physical aggression	Actions involving serious physical contact where injury occurs (e.g., hitting, punching, hitting with an object, kicking, hair pulling, scratching, etc.).

*****Vandalism, Weapons Use/Possession, Drugs, Tobacco- MUST be reported immediately to the SRO and administration for investigation.**

Initial Teacher Response Examples

Loss of Privileges (e.g. Natural consequences)
 Send Note Home
 Call Parent
 Reinforce others for appropriate behavior
 Make student state expectation

Sample Office Consequences

Loss of Privileges
 Call Parent
 Time in Office
 In-School suspension
 Suspension