

Shadowlawn Elementary



Positive Behavior Support
2007-2008

Our Shadowlawn Expectations:

Be Safe

Be Prepared

Be Respectful

Be Responsible





Be Safe - Be Prepared - Be Respectful - Be Responsible

Cafeteria **Hallway/
Sidewalk** **Playground** **Restrooms**

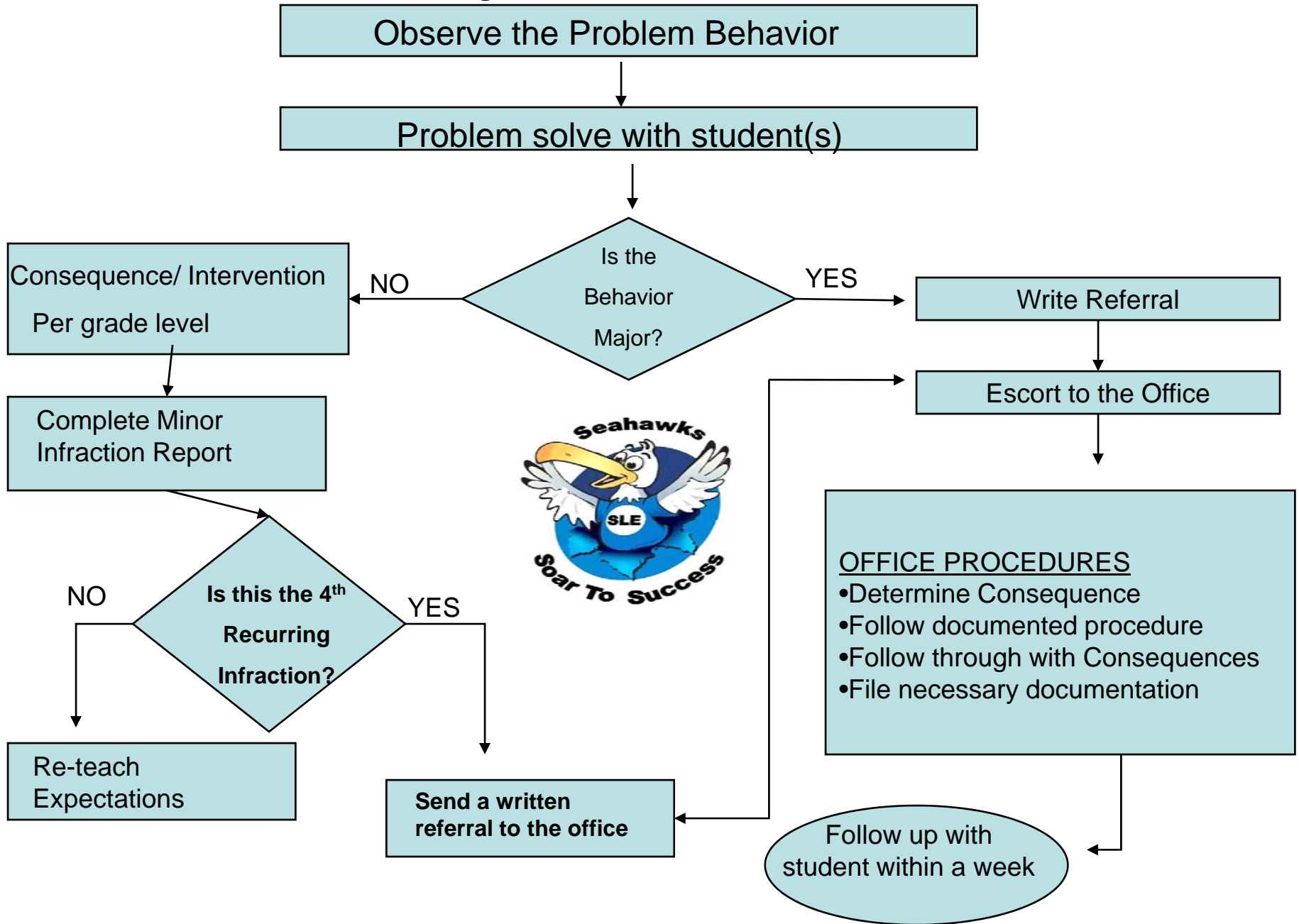
SEAHAWKS	Walk quietly in line Use your manners	Walk facing forward Stay to the right side	Follow adult instructions Use equipment properly	Flush the toilet Leave the area clean
LEAD BY	Stay seated Use inside voices	Keep your hands to yourself Walking feet	Follow game rules Include everyone	Use a quiet voice Give others privacy
EXAMPLE	Clean your area Pick up your trash Wait to be dismissed	Talk quietly Be alert to your environment	Keep hands and feet to yourself Use polite language Stay in designated areas	Sanitize/ wash your hands Conserve paper supplies

PBS Mission Statement



SLE will focus on consistent enforcement
of rules and procedures
through emphasis
on the character traits and
open communications
with staff, students, and parents.

General Procedures for Dealing with Problem Behavior



Soar to Success Cards



- Students can earn “Soar to Success Cards” for showing a good example of a character trait or any of our school expectations.
- Students can use these cards in 3 ways;
 - the PBS Store to “purchase” fun items.
 - Once students earn 25 cards, they can earn a special card into the Soar to Success Raffle Bags.
 - They can earn a card into the raffle bags by showing an exceptional example of a character trait or any of our school expectations.

Soar to Success Cards

Soar to Success Cards

Name _____

Respect
Responsibility
Honesty
Fairness
Kindness
Tolerance
Perseverance



Self-Discipline
Integrity
Self-Control
Forgiveness
Citizenship
Cooperation
Caring

Soar to Success Raffle Bags



- We have a Primary Raffle Bag and an Intermediate Raffle Bag.
- During the Morning News on Monday – Thursday, a Leadership Team member draws one name from each bag and announces the winners.
- The winners come to the Guidance Office and choose between a trip to the treasure box or a McDonald's coupon for a free hamburger/cheeseburger or ice cream.

PBS Store



- Students can use their “Soar to Success cards they have earned to buy fun items in the PBS Store.
- The PBS Store is a permanent store which is located in a large storage room in the multi-purpose room.
- Items can be purchased for a little as 5 Soar cards up to 200 Soar cards.
- Classes visit the store at their convenience and the front office arranges for the store to be unlocked.

Recognition on the Morning News



- Every Friday on our Morning News, we recognize the students who have won the Soar to Success Raffle throughout the week.
- These students help us with the Pledge of Allegiance. Each student then has an opportunity to introduce themselves to the school.

Soar to Success Raffle Winners

Winners have a choice of McDonald's Coupon or Treasure Box.

Each week's winners will be on the news on Friday morning.

Please list the student's name and classroom teacher:

Monday:

Teacher:

**Treasure Box or
McDonald's coupon?**

Tuesday:

Wednesday:

Thursday:

Friday:

No RAFFLE –

Winners from Mon. – Thurs. will be on the news to help with the Pledge of Allegiance.

Area Rules

- Bathroom Rules
- Playground Rules
- Bus Rules
- Cafeteria Rules
- Bike Rules
- Hall Rules
- Media Rules



Cafeteria Rules



You should know your number

Use your quiet voices

Make a choice before getting into line

Mind your manners

You should leave your area neat

Bathroom Rules



Flush the toilet

Leave the area clean

Use a quiet voice

Sanitize your hands

Help conserve supplies

Bus Rules



Be at the bus stop five minutes before boarding time.

Use caution on roadways while waiting for the bus.

Sit in assigned seat

Remember to obey the driver

If the bus is moving, you should not be moving.

Don't bring food or drink on the bus

Every part of your body should stay inside the bus

Area Rules



- See attached “PBS Area Expectations” file for more posters.

Important PBS Information for Teachers –

Discipline Referrals:

Teachers, please be sure to have the following information on major referrals:

Time incident happened – NOT the time you are writing the referral

Pick 1 offense – our data entry program will only allow you to enter 1 offense

Do not put other student's name involved on the referral as parents will see it. Note other students involved as “peers”. We will ask you which student was involved.

Soar to Success Cards –

Teachers, please continue to give out Soar to Success cards as often as you can!!!! PBS will be more effective with your participation.

Soar Card Drawing:

One Soar card from Primary bag and one from Intermediate bag will be drawn each morning Monday – Thursday. Winners can pick from either McDonald's coupons or treasure chest. On Fridays – Drawing winners (8 students) can come on the news to do the Pledge of Allegiance.

New Posters:

There are new posters in the cafeteria, media center, bus, playground, bike area, hallway areas and a few bathrooms. Teachers should all have 1 small Shadowlawn Expectations poster hanging in their classroom.

Data:

Team Leaders will receive an updated PBS discipline data in their mailboxes this week to share with their teams.

Important PBS Information for Teachers continued:

Data:

Teachers will receive updated PBS discipline data in their mailboxes or email week to share with their teams.

Update on PBS Store:

Sign up sheets for the PBS store will be available at the end of January. Please remind your students to earn cards to use in the store to get “cool stuff”. PBS will be more effective if your students can visit the store to spend their Soar cards.

Resources for Teachers:

- Various Behavior Charts used for students who have behavior issues -
http://www.latitudes.org/behavioral_charts.html
- Attention Deficit Resource:
<http://www.addinschool.com/elementary.htm>



With PBS our
students can
Soar to Success!

Go Seahawks!